



# Student Enrolment Procedures and Protocols

### Contents

Document History and Evaluation .....	2
1. Synopsis .....	3
2. Managing enrolments in schools.....	3
3. Local Enrolment .....	3
4. Residential address check.....	4
5. Enrolment cap .....	5
6. Local enrolment buffer .....	5
7. Non-local enrolment.....	5
8. Criteria .....	6
9. Enrolment Panel .....	6
10. Waiting lists.....	7
11. Enrolment time frame .....	7
12. Appeals.....	7
13. Enrolment application decision tree.....	8
14. Key Enrolment Figures .....	8
15. Enrolment Numbers – Current 2020 & Projected for 2021 .....	9

### Document History and Evaluation

Version	Author	Date
1.1	M. McConville	27 February 2020
1.2	M. McConville	5 June 2020
1.3	M .McConville	9 June 2020
1.4	M. McConville	10 June 2020
1.5	M.McConville	9 Feb 2021
1.6	M.McConville	15 May 2021

This policy is evaluated at the commencement of every year and in Term 3 every year for projected student enrolments in the next year.

The Enrolment Numbers – Current 2021 and Projected for 2022 are updated throughout the year and for the Year 7 Enrolment Panel.

# Student Enrolment Procedures and Protocols

---

## 1. Synopsis

This document supports Toronto High School's implementation of the NSW Department of Education's Enrolment of Students in NSW Government Schools Policy (July 2019) and should be read in conjunction with the [General Enrolment Procedures](#).

## 2. Managing enrolments in schools

A student is entitled to enrol at the local school that the student is eligible to attend if their home is within that school's local intake area. Parents may apply to enrol their child in the school of their choice. Acceptance is subject to the child being eligible to attend and the school can accommodate the child. (General Enrolment Procedures: 2 & 9)

Parents may enrol a child if they turn 5 years of age on or before 31 July in that year. Students identified as gifted and talented, who are aged 4 years or older at 31 January of the year of enrolment may only be enrolled in accordance with the Gifted and Talented policy. (General Enrolment Procedures: 2)

## 3. Local Enrolment

To determine if a student's home is within a school's local intake area please use the School Finder App by clicking on the button below or accessing on the Internet.



### 4. Residential address check

Under the Education Act 1990, principals may require proof of address to their satisfaction in order to establish a child’s entitlement to enrol in the school. However, any requests for proof of address must be reasonable in the circumstances. Schools that are at or nearing their local enrolment buffer as calculated in accordance with sections 9.1 and 9.2 will use the following 100-point residential address check to determine the student’s entitlement to enrol at the school.

Document showing the full name of the child’s parent	Points
1. Only one of (i.e. no additional points for additional documents) <ul style="list-style-type: none"> <li>1.1. Council rates notice</li> <li>1.2. Lease agreement through a registered real estate agent for a period of at least 6 months or rental board bond receipt</li> <li>1.3. Exchanged contract of sale with settlement to occur within the applicable school year</li> </ul>	40
2. Any of the following <ul style="list-style-type: none"> <li>2.1. Private rental agreement for a period of at least 6 months</li> <li>2.2. Centrelink payment statement showing home address</li> <li>2.3. Electoral roll statement</li> </ul>	20 each
3. Any of the following documents <ul style="list-style-type: none"> <li>3.1. Electricity or gas bill showing the service address*</li> <li>3.2. Water bill showing the service address*</li> <li>3.3. Telephone or internet bill showing the service address*</li> <li>3.4. Drivers licence or government issued ID showing home address*</li> <li>3.5. Home building or home contents insurance showing the service address</li> <li>3.6. Motor vehicle registration or compulsory third party insurance policy showing home address</li> <li>3.7. Statutory declaration stating the child’s residential address, how long they have lived there, and any supporting information or documentation of this</li> </ul>	15 each

\* up to three months old

NB: Where a parent is able to give good reasons why they are unable to present documents, or in exceptional circumstances, principals may waive or vary the 100-point residential address check requirements when assessing a child’s entitlement to enrol at the school. If this is to occur, principals are required to seek the approval of the Director, Educational Leadership.

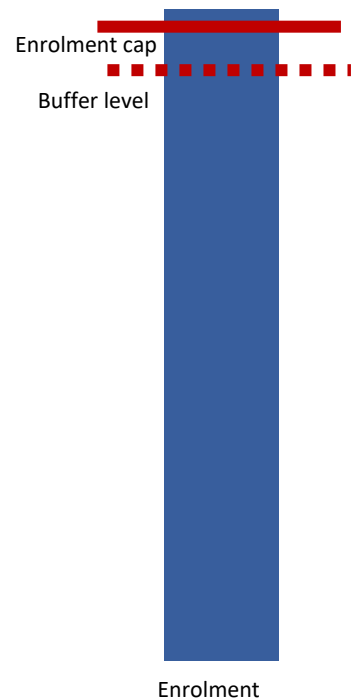
### 5. Enrolment cap

The Enrolment Cap for a school is established centrally based on permanent accommodation. (General Enrolment Procedures: 9.1)

The enrolment cap for Toronto High School is **1020**. This does not include students in Support Unit classes.

Toronto High School's enrolment cap of **1020** is based on accommodation of **51** classrooms. Three permanent rooms are allocated to 2 x IM classes and 1 x IO class. There are two additional demountable buildings for ED classes.

In 2022 there is planned to be two more Special Education Classes established (either 2x MC or 1 x MC & 1 x Autism).



### 6. Local enrolment buffer

Within the enrolment cap, a number of enrolment places (the buffer) must be set aside for the enrolment of local students arriving throughout the year. The size of the buffer will differ in each school based on historical data, enrolment fluctuations and on the number of families moving into or out of the area. The size of the local enrolment buffer is set locally by the principal and approved by the Director, Educational Leadership.

It is reviewed annually and set in time for assessing applications for the following year's enrolment intake. Places in the local enrolment buffer are not to be offered to non-local students. (General Enrolment Procedures: 9.2)

To accommodate in zone enrolments the school has determined a buffer of 25 places.

Therefore if Toronto High School's enrolment is above **995** the school will be unable to accept Non-local enrolments.

This buffer is dependent on available places within year groups. TORONTO HIGH SCHOOL may be below the buffer but unable to accept a student due to the class establishment structure and numbers. The relevant Deputy Principal will identify this; as class numbers are prone to constant fluctuations.

### 7. Non-local enrolment

Non-local enrolment applications are only considered by schools that can accommodate the child below the set local enrolment buffer level. (General Enrolment Procedures: 9.4)

Except for enrolments at the commencement of the school year, schools that have not reached their local enrolment buffer level should only accommodate non-local enrolments into classes with available places. (General Enrolment Procedures: 9.4)

## Student Enrolment Procedures and Protocols

---

Non-local enrolment applications include the [Application to enrol in a NSW Government school](#) and a non-local enrolment application form. The non-local enrolment application form is developed by the school and requires the applicant to address the selection criteria and provide supporting documentation. (General Enrolment Procedures: 9.4.1)

When the school's enrolment level is close to the local enrolment buffer, the principal is required to inform the principal of the child's local school when considering the non-local enrolment application, and to seek approval of the Director, Educational Leadership before making an offer to enrol the child. (General Enrolment Capacity 9.4)

Therefore, if Toronto High School's enrolment is above **985** the school will inform the principal of the local school and seek approval of the DEL before making an offer to non-local enrolments.

### 8. Criteria

The criteria, listed below, for the enrolment of non-local students has been developed by the Principal, Mr Mark McConville, after consultation with the school community. (General Enrolment Procedures: 9.4.2)

- siblings already enrolled at the school
- proximity and access to the school
- medical reasons
- safety and supervision of the student before and after school
- availability of subjects or combinations of subjects
- compassionate circumstances
- structure and organisation of the school
- recommendation by Primary School or current Principal
- considering a non-govt school enrolment

Criteria must not include student ability, performance or achievement. Priority should be given to siblings of currently enrolled students, where possible. Only specialist schools, for example sports or performing arts high schools, may include student ability, performance or achievement in the school's specialisation within the criteria for non-local enrolment. (General Enrolment Procedures: 9.4.2)

### 9. Enrolment Panel

When demand for non-local enrolment exceeds the number of places available below the local enrolment buffer the school will establish an Enrolment Panel to consider all applications against the above criteria. (General Enrolment Procedures: 9.4)

1	School Executive – Chairperson (DP)
2	Staff member nominated by the Principal
3	School community member nominated by the school's parent organisation

Enrolment panels consider:

- non-local enrolment applications, only where demand for non-local places exceeds the number of non-local places available (General Enrolment Procedures: 9.4)
- adult enrolment applications, in all circumstances. (General Enrolment Procedures: 10.3)
- applications for unique school settings, in accordance with the specific school's assessment and placement procedures. (General Enrolment Procedures: 5.1.)

### 10. Waiting lists

A waiting list may be created for non-local students who are not offered enrolment. Any waiting list created will remain valid during the current intake period only. The waiting list is determined by the enrolment panel. Parents are advised in writing if their child is to be placed on a waiting list and his or her position on it. The length of the waiting list should reflect realistic expectations of potential vacancies. (General Enrolment Procedures: 9.4.4)

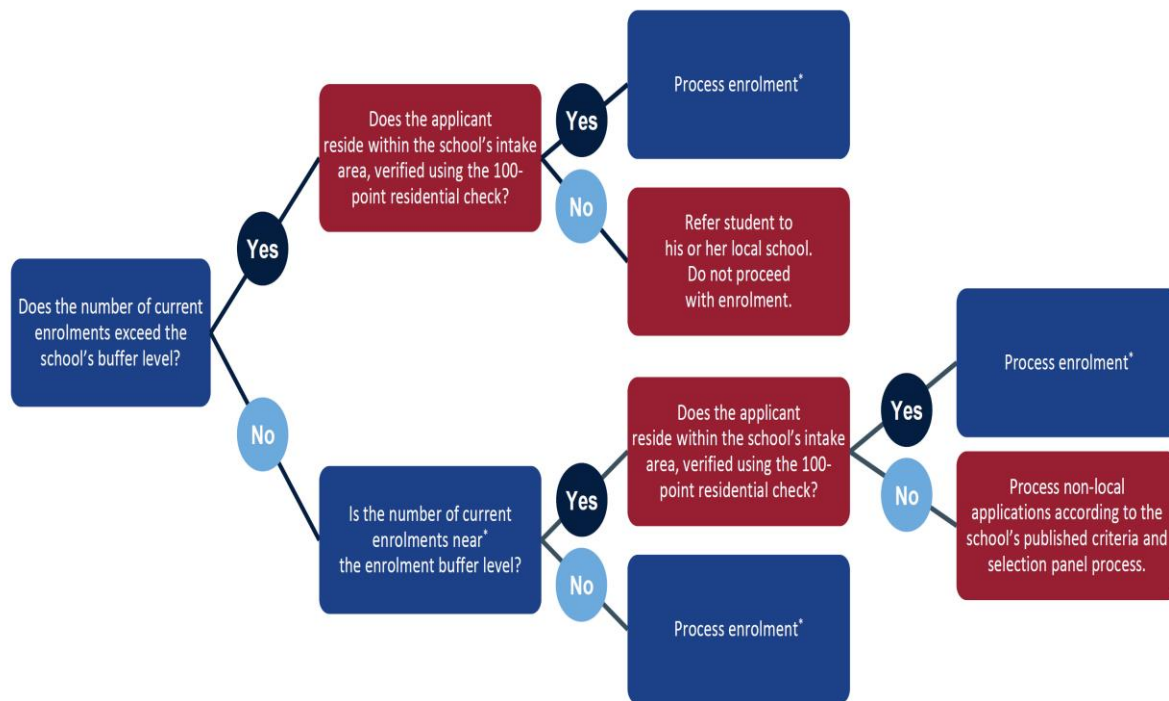
### 11. Enrolment time frame

It is anticipated that enrolment of students should not exceed 10 days from receipt of completed [Application to Enrol in a NSW Government School](#). Where circumstances indicate that this timeframe may not be met Principals are required to consult their Director, Educational Leadership.

### 12. Appeals

Unsuccessful non-local applicants may appeal against the decision of the enrolment panel. The appeal is made in writing to the principal and sets out the grounds of the appeal. If necessary, the principal should provide or arrange assistance, such as an interpreter, to enable the appeal to be set out in writing. The purpose of the appeal is to determine whether the stated criteria have been applied equitably. If the principal is not on the enrolment panel, the principal considers the appeal and makes a determination. Otherwise, the appeal may be determined by the Director, Educational Leadership. (General Enrolment Procedures: 9.4.5)

## 13. Enrolment application decision tree



\*For more information, visit: <https://education.nsw.gov.au/policy-management-schools/media/documents/Decision-tree-Revised-enrolment-policy-2019.pdf>

## 14. Key Enrolment Figures

**As at 8<sup>th</sup> Feb 2021:**

<b>Enrolment Cap</b>	<b>1020</b>
<b>Non-Local Buffer</b> <i>This figure is dependent on individual year groups and the number of established classes. Availability will vary between year groups.</i>	<b>995</b>
<b>Non-Local - DEL / local principal contact</b>	<b>985</b>



### 15. Enrolment Numbers – Current 2021 & Projected for 2022

Note that Special Education students are not included in the CAP and BUFFER calculations.

#### **Current Enrolment 8<sup>th</sup> February 2021 (Excluding Special Education)**

Year 7	171
Year 8	170
Year 9	162
Year 10	174
Year 11	143
Year 12	106
<b>mainstream</b>	<b>926</b>

#### **Predicted Enrolment 2022 (available after June)**

#### **Numbers for Year 7 Panel (Excluding Special Education)**

Year 7 – local	TBA
Year 7 - non-local	TBA
<b>Total</b>	<b>190</b>
Year 8	170
Year 9	170
Year 10	160
Year 11	140
Year 12	105
<b>mainstream</b>	<b>935</b>